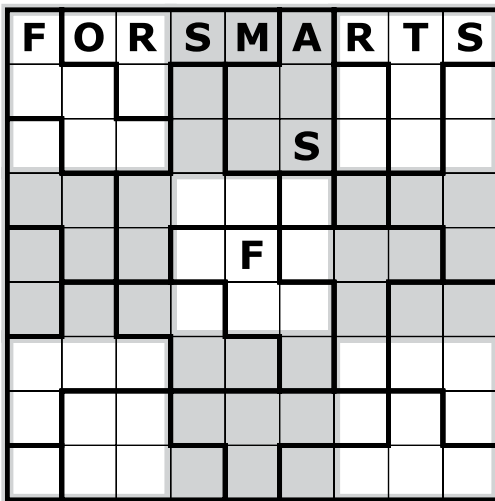


10. Figure sudoku

7



Fill in the grid so that every row, column, and 3x3 box contains the complete set of the following letters: F,O,R,S,M,A,R,T,S. All occurrences of each shape outlined in black (rotated and/or mirrored) must contain the same set of letters.

Answer key: write down the contents of the main diagonal, going from the bottom left corner to the top right corner. For the example the answer would be: UOUSSU.

Example:

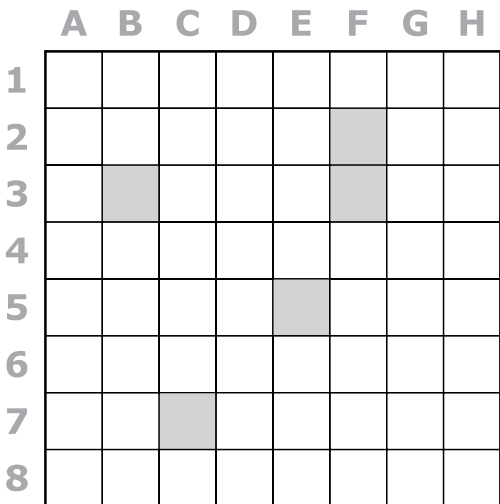
S	U	D	O	K	U
O	U	K	U	S	D
U	K	O	S	D	U
D	S	U	U	O	K
K	O	U	D	U	S
U	D	S	K	U	O

11. Chess battleships

5

+

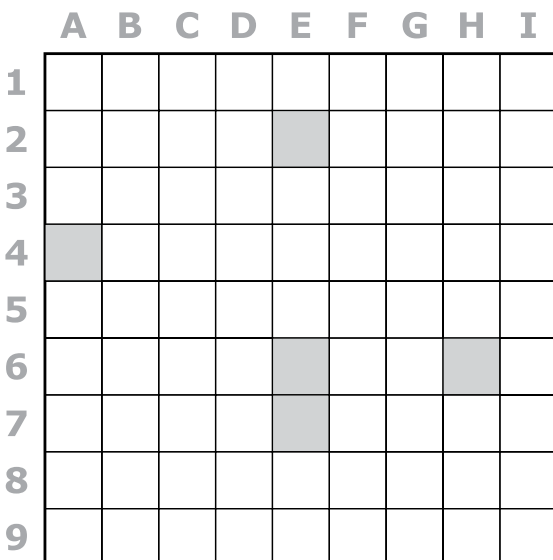
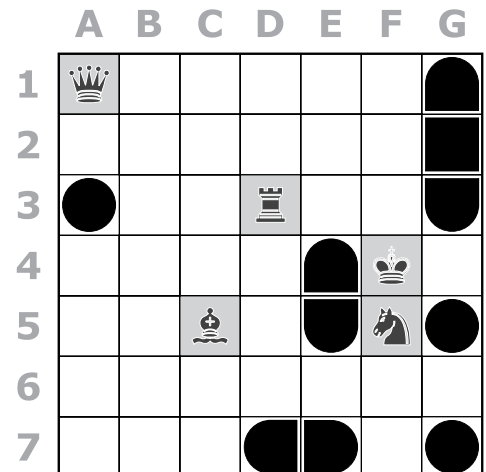
6



In each grid, place five different chess pieces (king, queen, rook, bishop and knight) in the grey squares, and a complete set of battleships (shown) in the remaining area, so that each piece attacks exactly one ship of every kind. Ships cannot touch each other, not even diagonally. Digits outside the grids show the number of cells occupied by ships in corresponding row or column.

Answer key: for each grid write down the coordinates of the 1-cell ships. For the example the answer would be: A3,G5,G7.

Example:



5

